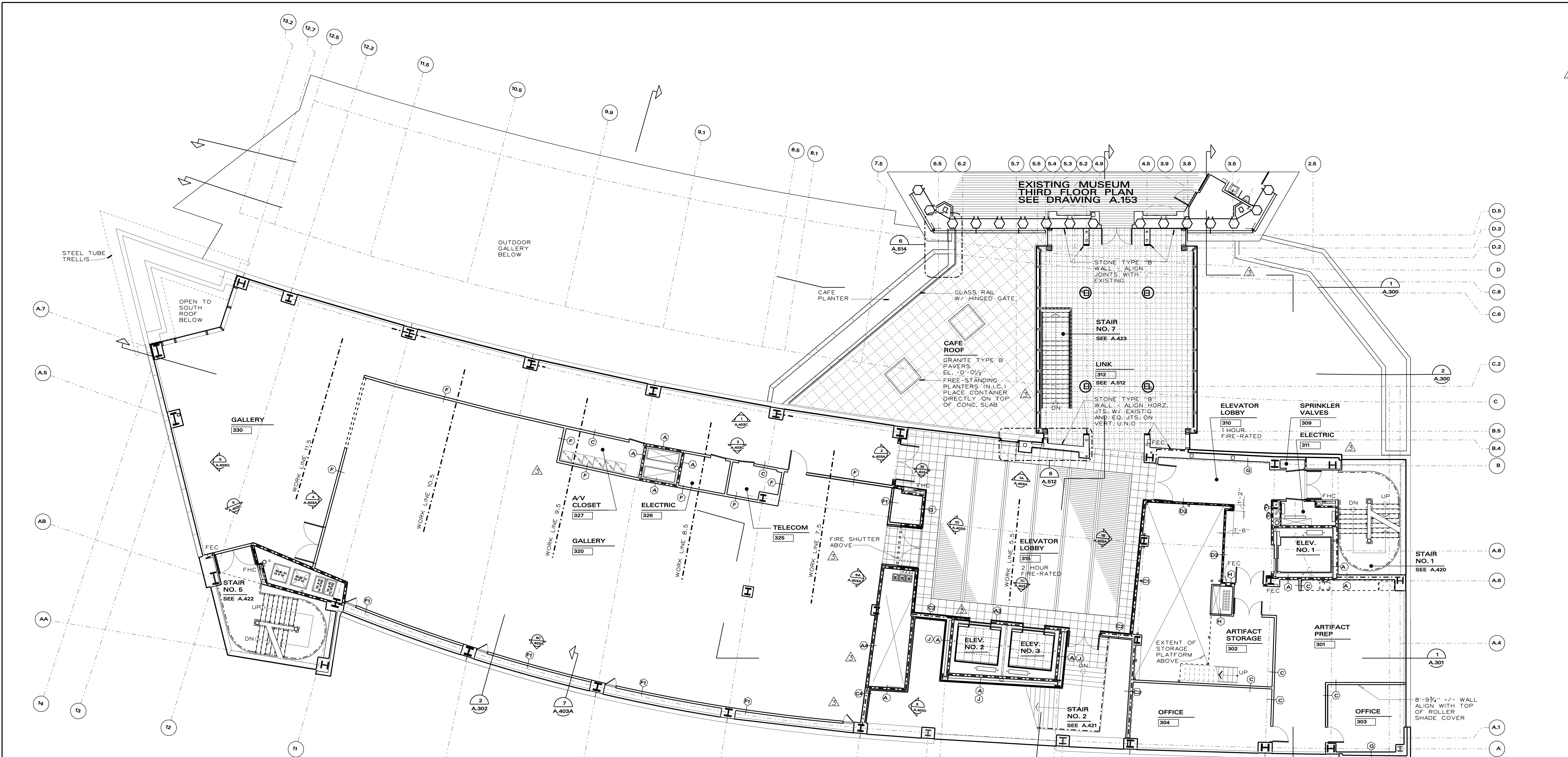


ISSUED TO	DATE
FNDN BIDS	28SEP01
STEEL BIDS	1 NOV01
CM/ GC	1 NOV01
BLDG DEPT	17DEC01
BPCA	1 FEB02
CM ADDM No. 3	1 MAR02
BULLETIN No. 5	04 JUN02
BPCA	5 SEP02
BULLETIN No. 6	2 OCT02
BULLETIN No. 7	18 DEC02
BULLETIN No. 9	13 JUN03
BLDG. DEPT.	12 JUN03
BULLETIN No. 20	14 NOV03



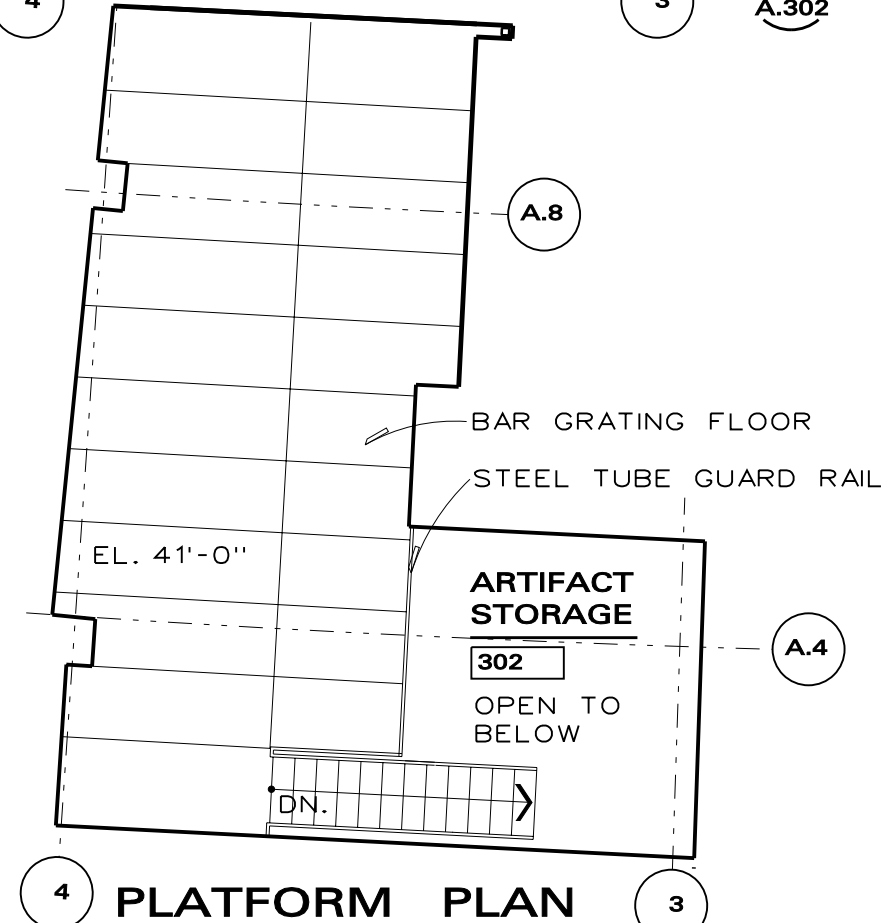
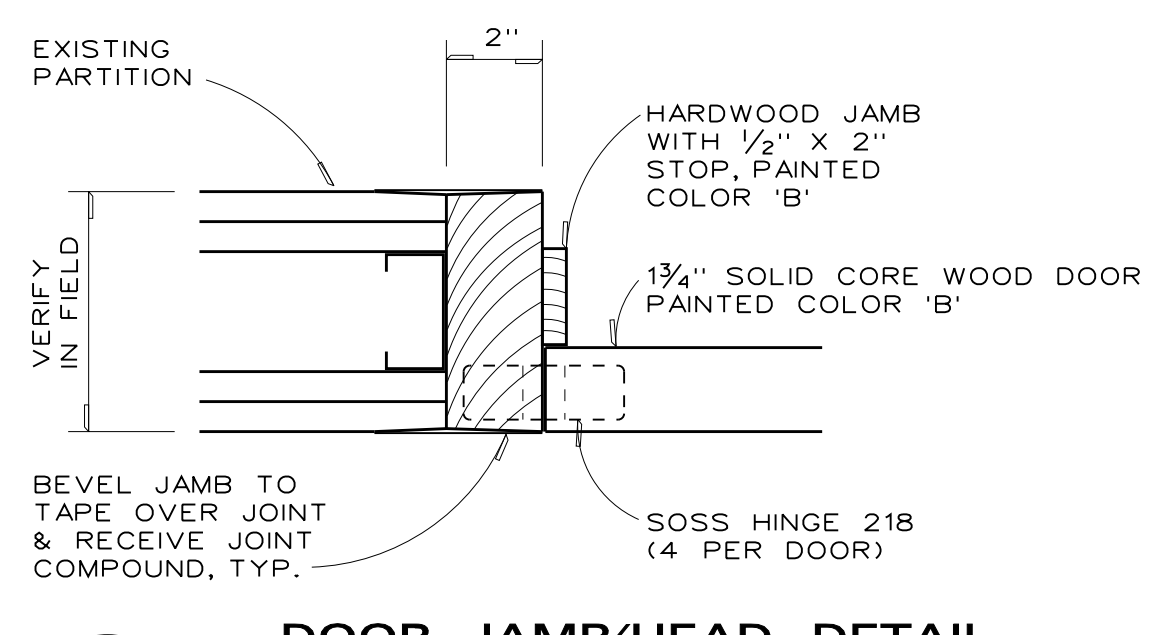
NOTE 1 - DOOR AND HARDWARE REVISION
 GENERAL:
 REMOVE DOORS AND FRAMES AND REPLACE WITH SOLID CORE WOOD DOORS AND FRAMES SET FLUSH WITH PARTITION, TAPE AND COMPOUND FRAME TO GYPSUM BOARD PARTITION.

HARDWARE:
 DOOR 320G - GALLERY 330 FROM GALLERY 320
 4 HINGES - REPLACE CB199 5 X 4 1/2 US 32 D WITH SOSS 218 HINGES
 1 EXIT DEVICE - MODIFY 9875 X 992L-M TO 9875EC (NO EXTERIOR TRIM)
 1 CLOSER - REINSTALL EXISTING CLOSER

DOOR 325 - GALLERY 330 FROM TELECOM 325
 4 HINGES - REPLACE CB199 5 X 4 1/2 US 32 D WITH SOSS 218 HINGES
 1 CLOSER - REINSTALL EXISTING CLOSER
 1 LOCKSET - REINSTALL LOCKSET L9080L O1A WITH LEVER ON INTERIOR ONLY (NO EXTERIOR TRIM).
 1 EDGE PULL - INSTALL NEW TRIMCO/BBN 1062 EDGE PULL
 1 REINSTALL DOOR CONTACT AND ADD RX SENSOR ABOVE DOOR ON INTERIOR OF CLOSET.

DOOR 326 - GALLERY 330 FROM ELECTRIC 326
 4 HINGES - REPLACE CB199 5 X 4 1/2 US 32 D WITH SOSS 218 HINGES
 1 CLOSER - REINSTALL EXISTING CLOSER
 1 LOCKSET - REINSTALL LOCKSET L9080L O1A WITH LEVER ON INTERIOR OF DOOR ONLY (NO EXTERIOR TRIM).
 1 EDGE PULL - INSTALL NEW TRIMCO/BBN 1062 EDGE PULL

DOOR 327 - GALLERY 330 FROM A/V CLOSET 327
 4 HINGES - REPLACE CB199 5 X 4 1/2 US 32 D WITH SOSS 218 HINGES
 1 CLOSER - REINSTALL EXISTING CLOSER
 1 LOCKSET - REINSTALL LOCKSET L9080L O1A WITH LEVER ON INTERIOR OF DOOR ONLY (NO EXTERIOR TRIM).
 1 EDGE PULL - INSTALL NEW TRIMCO/BBN 1062 EDGE PULL



REFERENCE DRAWINGS:
 A.410 THEATER
 A.420 STAIRS
 A.430 ELEVATORS
 A.440 TOILETS

LEGEND

WALL TYPES

DOOR NUMBER

EL. X'-X" THIRD FLOOR DATUM ELEVATION 33'-6" TO MATCH EXISTING BUILDING THIRD FLOOR-- EQUIVALENT SURVEY ELEVATION 43'-2 1/2" VARIATIONS ARE GIVEN RELATIVE TO FLOOR DATUM

FIRE RATED WALL (SEE WALL TYPE)

WATER FOUNTAIN

DOOR & HARDWARE SCHEDULE											
DOOR NUMBER	OPENING SIZE	FIRE RATING	GLASS TYPE	FRAME TYPE	JAMB/ MITG STYLE	HARDWARE ITEMS	LOCKSET/LATCH/SET	DEADLOCK	EXIT DEVICE	DOOR NUMBER	
301	5'-6" X 7'-10 3/4"	3/4	2A	1	M2	4	1	A/EL	A1/EL	L9070	301
302	5'-6" X 7'-10 3/4"	1A	1	4	M2	4	1	A/EL	A1/EL	L9080EU	302
303	3'-0" X 7'-10 3/4"	1A	1	4	4	1	A	A1	A1	L9070	303
304	3'-0" X 7'-10 3/4"	1A	1	4	4	1	A	A1	A1	L9070	304
309	3'-6" X 7'-10 3/4"	3/4	1A	1	4	4	1	A	A1	L9080	309
310	7'-0" X 7'-10 3/4"	1/2	2A	B	M1	7	1	A/EL	A1/EL	L9080	310
310A	5'-6" X 7'-10 3/4"	1/2	2A	1	M1	4	1	A/EL	A1/EL	L9080EU	310A
311	3'-6" X 7'-10 3/4"	3/4	2A	1	4	4	1	A	A1	L9080	311
312	6'-0" X 6'-6"	1/2	2A	SEE A.551	1	1	A/EL	D1/EL	A1	DC/EL	C
315	6'-0" X 7'-10 3/4"	1/2	2A	B	M1	7	1	A/EL	A1/EL	B&C	DC/EL
315A	3'-2 1/2" X 8'-0"	1C	SEE A.515	1	1	1	F	A1	A1	DC	C
320	7'-0" X 7'-10 3/4"	1/2	2A	4	M1	4A	1	A/EL	D1/EL	B/EL	DC
320A	7'-4" X 7'-10 3/4"	2A	1	4	M1	4	1	A/EL	D1/EL	B/EL	DC
320B	7'-8 3/4" X 8'-0 3/4"	2C	SEE A.403A	1	1	1	A	A1	A1	B&C	DC/EL
320C-F	2'-0" X 6'-6"	1C	SEE A.403A	1	1	1	A	A1	A1	B&C	DC/EL
320G	3'-8" X 7'-10 3/4"	SEE DETAIL 1/	A.103	SEE NOTE 1/	A.103	SEE NOTE 1/	A.103	SEE NOTE 1/	A.103	SEE NOTE 1/	A.103
325	3'-0" X 7'-10 3/4"	SEE DETAIL 1/	A.103	SEE NOTE 1/	A.103	SEE NOTE 1/	A.103	SEE NOTE 1/	A.103	SEE NOTE 1/	A.103
326	3'-0" X 7'-10 3/4"	SEE DETAIL 1/	A.103	SEE NOTE 1/	A.103	SEE NOTE 1/	A.103	SEE NOTE 1/	A.103	SEE NOTE 1/	A.103
327	7'-4" X 7'-10 3/4"	SEE DETAIL 1/	A.103	SEE NOTE 1/	A.103	SEE NOTE 1/	A.103	SEE NOTE 1/	A.103	SEE NOTE 1/	A.103
330	7'-4" X 7'-10 3/4"	1/2	2A	1	M1	4	1	A/EL	A1/EL	B&C	DC/EL

ROOM FINISH SCHEDULE									
ROOM No.	NAME	FLOOR	BASE	WALLS	CEILING	CEILING HEIGHT	REMARKS	DOOR NUMBER	
301	ARTIFACT PREPARATION	CONC SEALER	K	RESILIENT	PTD GYP BOARD	EXPOSED CONST	---	301	
302	ARTIFACT STORAGE	CONC SEALER	K	RESILIENT	PTD GYP BOARD	EXPOSED CONST	---	302	
303	OFFICE	CONC SEALER	K	RESILIENT	PTD GYP BOARD	EXPOSED CONST	---	303	
304	OFFICE	CONC SEALER	K	RESILIENT	PTD GYP BOARD	EXPOSED CONST	---	304	
309	SPRINKLER VALVE CLOSET	DECK COATING	DECK COATING	PTD GYP BOARD	EXPOSED CONST	---	EXTEND DECK COATING 4" UP WALLS ALL AROUND	309	
310	ELEVATOR LOBBY	VCT	RESILIENT	PTD GYP BOARD	EXPOSED CONST	9'-0"	PAINT TYPE C	310	
311	ELECTRIC	VCT	RESILIENT	PTD GYP BOARD	EXPOSED CONST	9'-0"	---	311	
327	LINK/ STAIRS	PORCELAIN TILE	PTD METAL	GLASS	PTD GYP BOARD	9'-0"	* PROVIDE PRICE FOR GRANITE TILE ALTERNATE	327	
315	ELEVATOR LOBBY	WOOD	STONE TYPE B	WOOD	ACOUSTIC WOOD CEILING	10'-9"	---	315	
320	GALLERY	CONCRETE - FUTURE FINISH N.L.C	PTD GYP BOARD	PTD GYP BOARD	EXPOSED CONST	9'-0"	---	320	
325	TELECOM	VCT	RESILIENT	PTD GYP BOARD	EXPOSED CONST	9'-0"	---	325	
326	ELECTRIC	VCT	RESILIENT	PTD GYP BOARD	EXPOSED CONST	9'-0"	---	326	
327	A/V CLOSET	VCT	RESILIENT	PTD GYP BOARD	EXPOSED CONST	9'-0"	---	327	
330	GALLERY	CARPET SEE DWG. C.103	RESILIENT	PTD GYP BOARD	WOOD CUBE	VARIES	SEE DWG. A.403C	330	
	STAIR NO. 1	RUBBER	GLASS	PTD GYP BOARD	VARIES	SEE DWG. A.420	---		
	STAIR NO. 2	STONE	GLASS	PTD GYP BOARD	VARIES	SEE DWG. A.421	---		
	STAIR NO. 5	RUBBER	GLASS	PTD GYP BOARD	VARIES	SEE DWG. A.422	---		
	STAIR NO. 7	RUBBER	GLASS	PTD GYP BOARD	VARIES	SEE DWG. A.423	---		

THIRD FLOOR PLAN

SCALE: 1/8" = 1'-0"

DATE: 05 FEB 03
 PROJECT NUMBER: 9809
 SHEET NUMBER: A.103

PROJECT NORTH

KEVIN ROCHE JOHN DINKELLO AND ASSOCIATES
 ARCHITECTS
 HAMDEN, CONNECTICUT
 A LIVING MEMORIAL TO THE HOLOCAUST
 MUSEUM OF JEWISH HERITAGE
 THE EAST WING
 HUGH L. CAREY BATTERY PARK CITY
 NEW YORK, NEW YORK