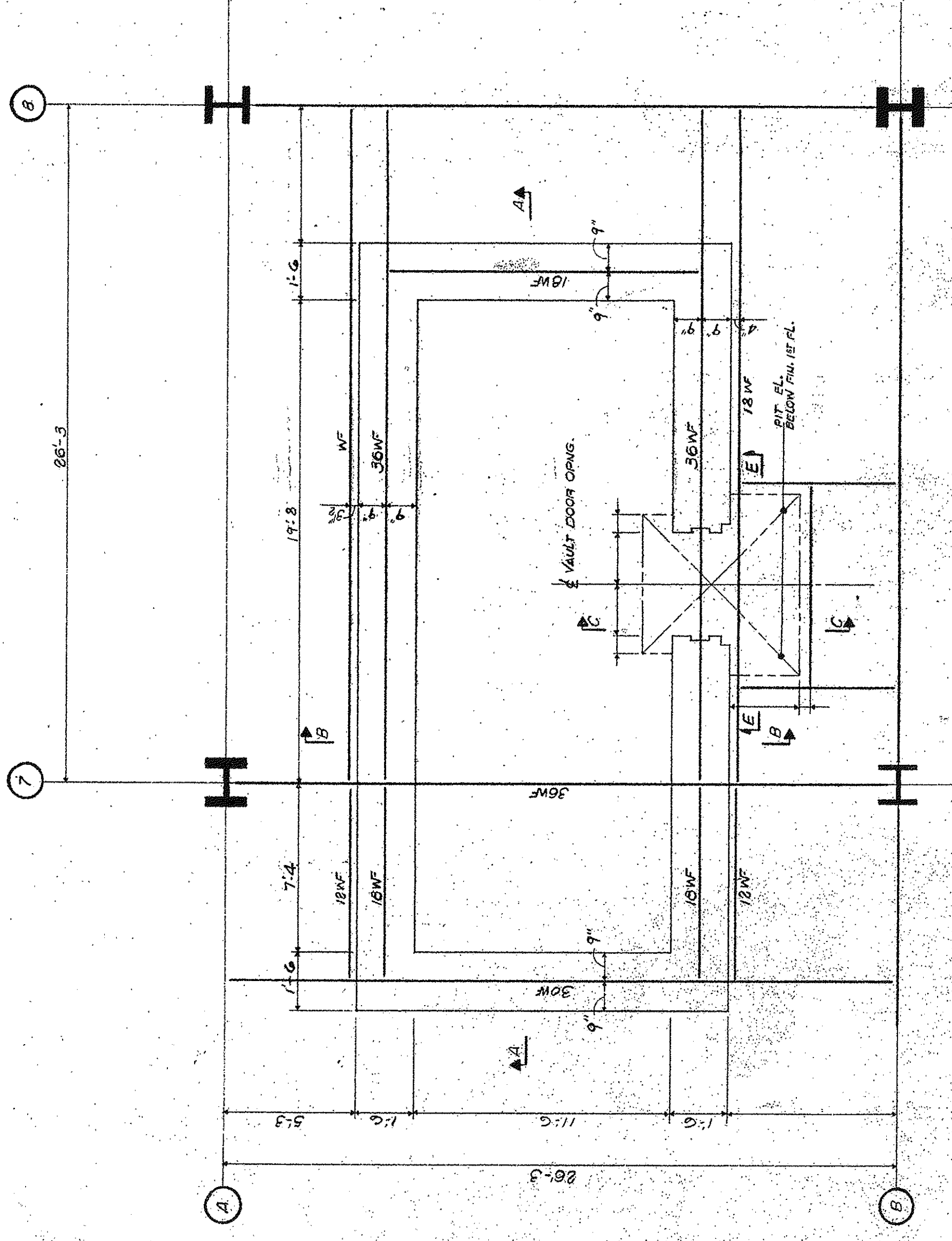
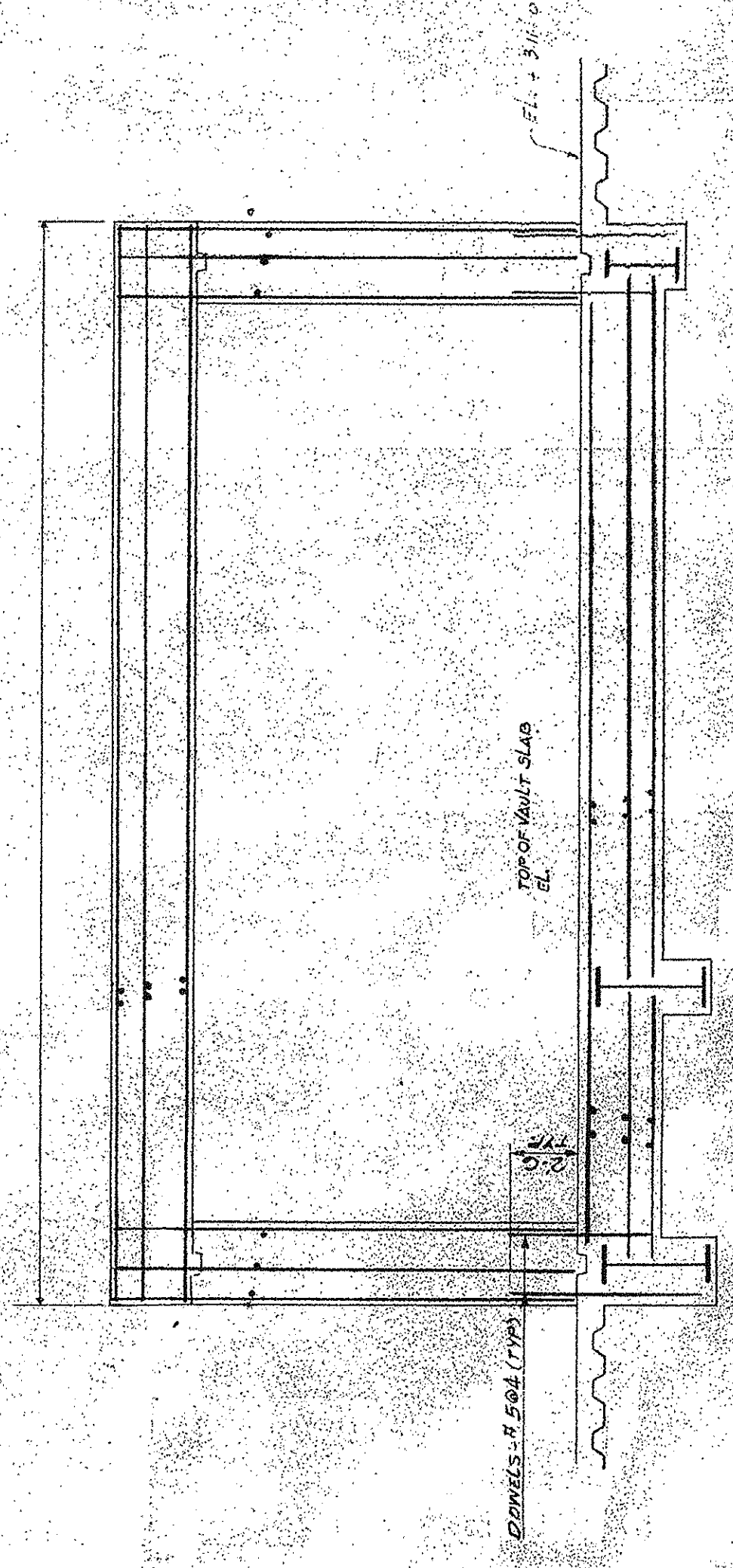


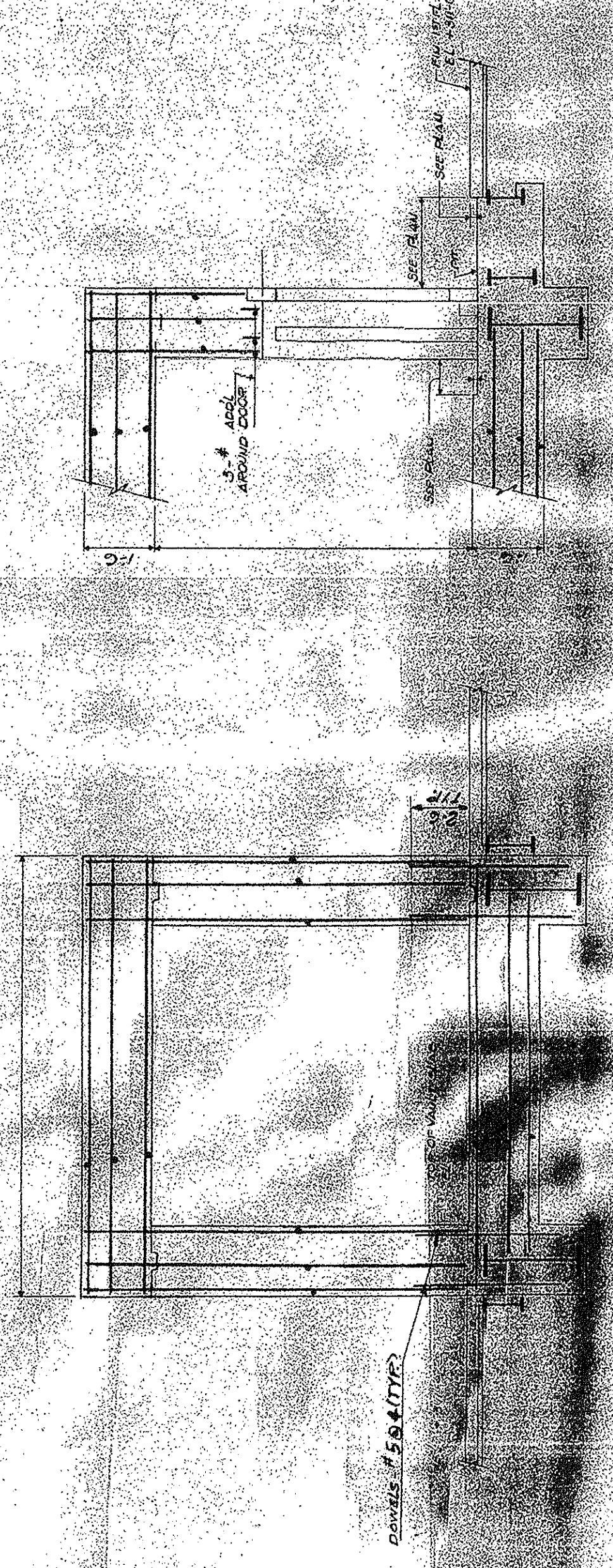
REVISIONS	
NO.	DESCRIPTION



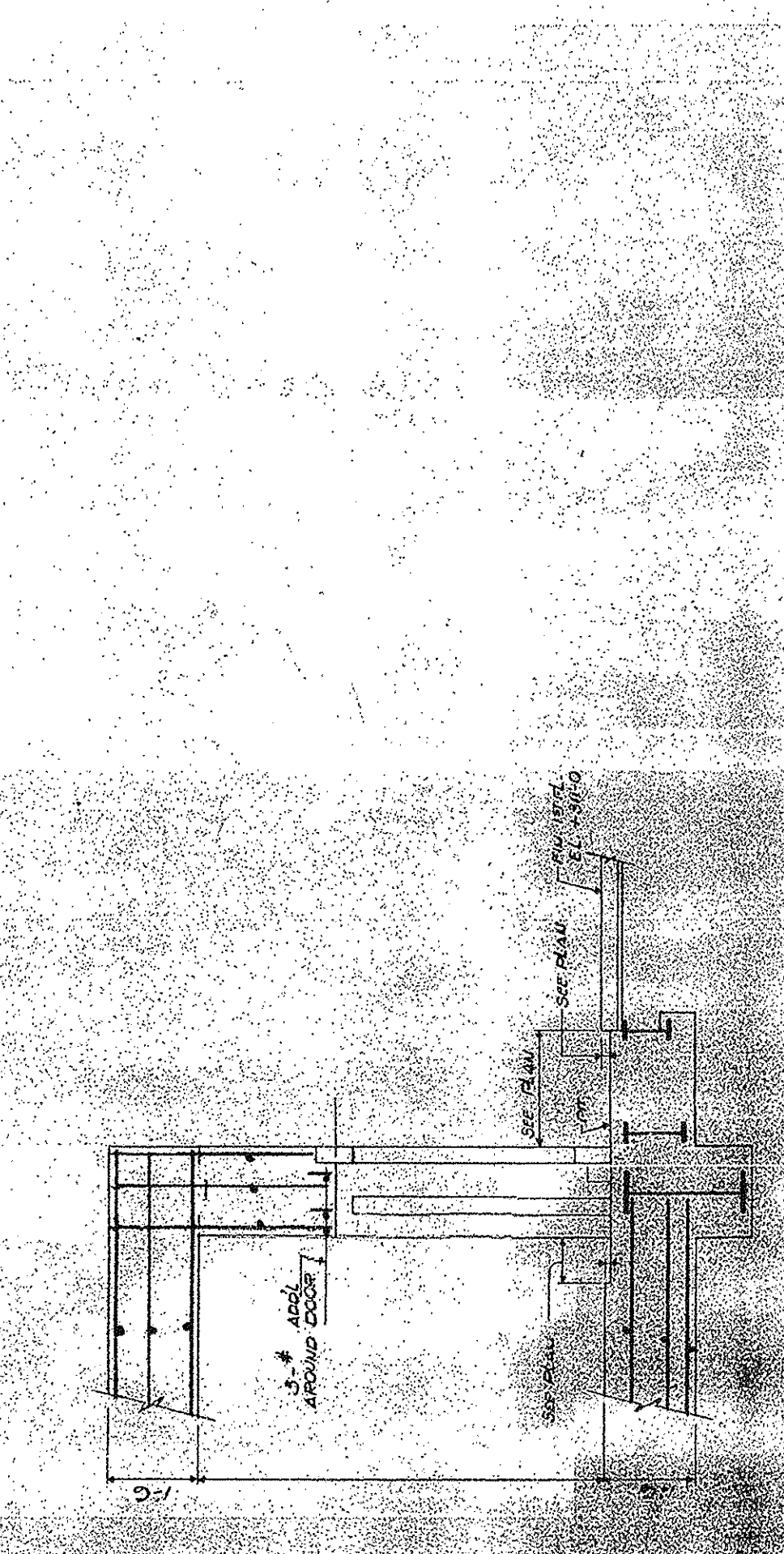
PLAN



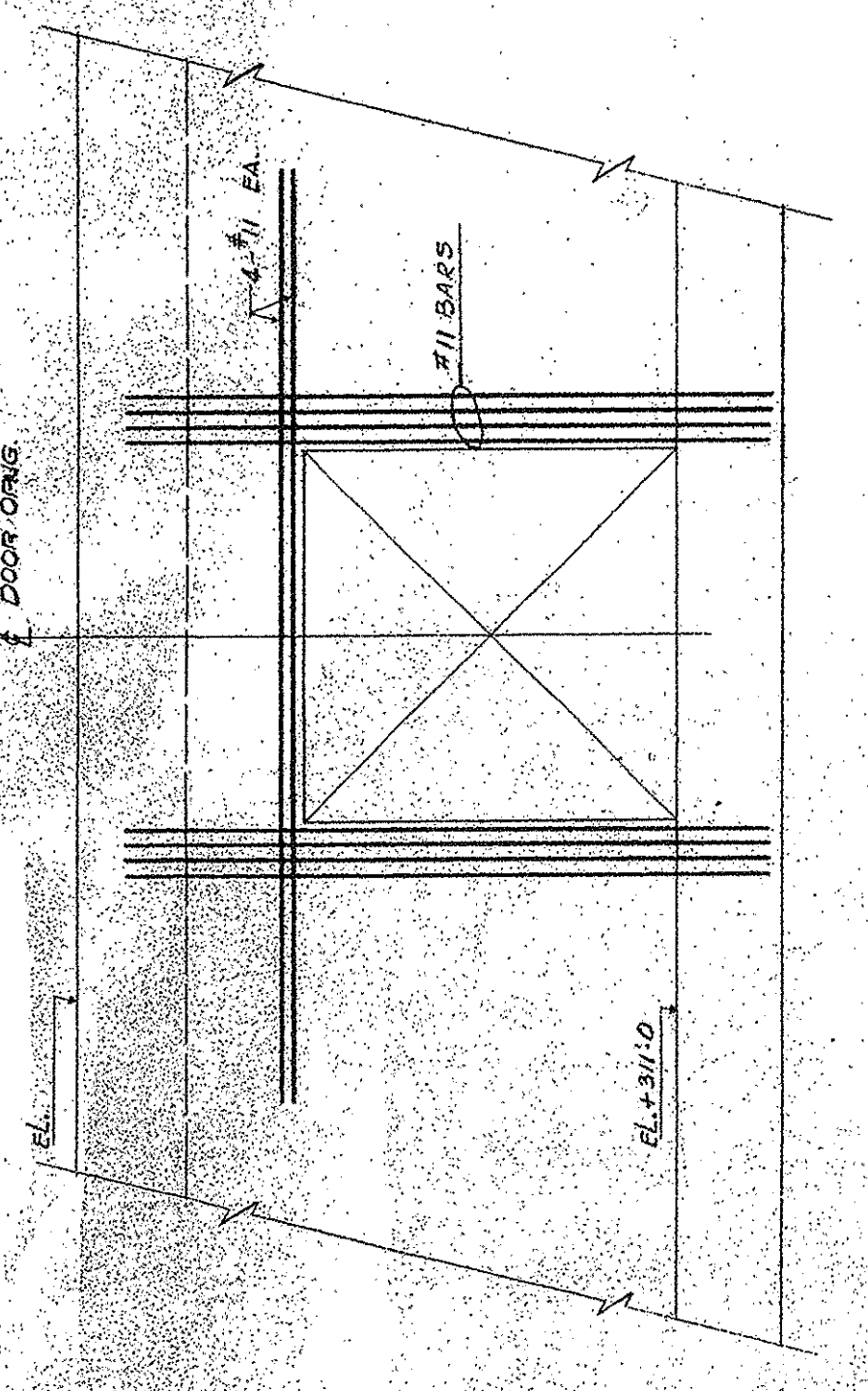
SECTION A-A



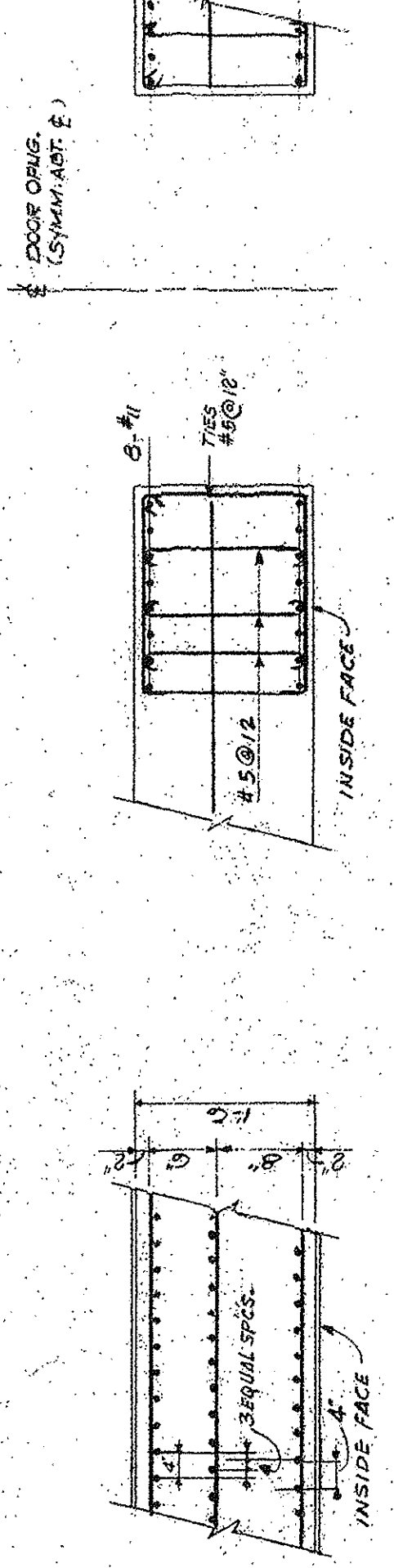
SECTION B-B



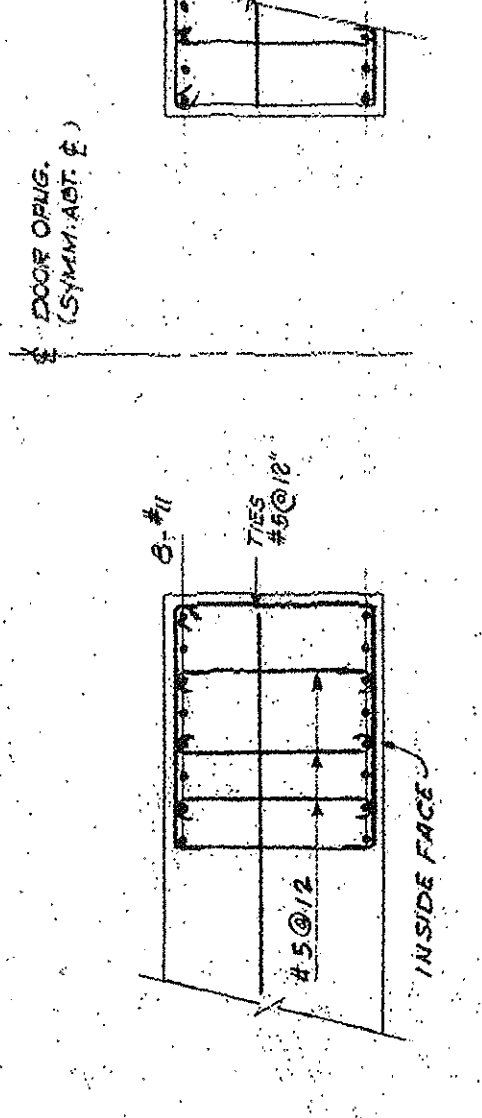
SECTION C-C



ELEVATION E-E



TYPICAL DETAIL OF REINFORCEMENT
SEE ALL NOTES, S&E & SPEC.
ALL REIN. #5 @ 4" UNLESS OTHERWISE NOTED.



TYPICAL PLAN THRU DOOR OPENINGS

- CONCRETE NOTES:**
1. CONCRETE SHALL BE PLACED IN 8" MAX. LIFT TO 5" MAX. COMPACTED IN EACH LIFT TO A MINIMUM OF 2500 P.S.I. STRENGTH.
 2. ALL REINFORCEMENT SHALL BE DEFORMED BARS.
 3. ALL REINFORCEMENT SHALL BE PLACED AS SHOWN ON DRAWING.
 4. ALL REINFORCEMENT SHALL BE PLACED AS SHOWN ON DRAWING.
 5. ALL REINFORCEMENT SHALL BE PLACED AS SHOWN ON DRAWING.
 6. REINFORCEMENT SHALL BE PLACED AS SHOWN ON DRAWING.

ISSUED TO	NO.	DATE	PKG. NO.
BANKERS TRUST PLAZA			
A FISHER BROTHERS PROJECT			
GREENWICH AND LIBERTY ST. N.Y. N.Y.			
SHREVE LAMB & HARMON ASSOCIATES P.C. ARCHITECTS 475 PARK AVENUE SOUTH N.Y. N.Y. 10016			
PETERSON AND BRICKBAUER ASSOCIATED ARCHITECTS 919 THIRD AVENUE N.Y. N.Y. 10022			
THE OFFICE OF JAMES RUDERMAN STRUCTURAL ENGINEERS 515 MADISON AVENUE N.Y. N.Y. 10022			
J.A.R.O'S. BAUM & BOLLES MECH. & ELEC. ENGINEERS 345 PARK AVENUE N.Y. N.Y. 10022			
PROJECT NUMBER			7101
DRAWING NUMBER			S-34
DATE			
SCALE			

FOR CONCRETE BIDS ONLY 12-1-71