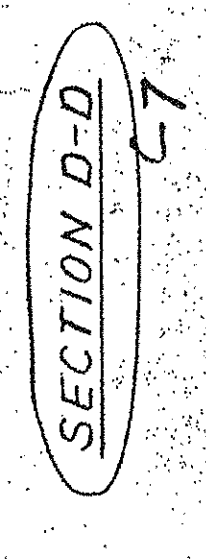
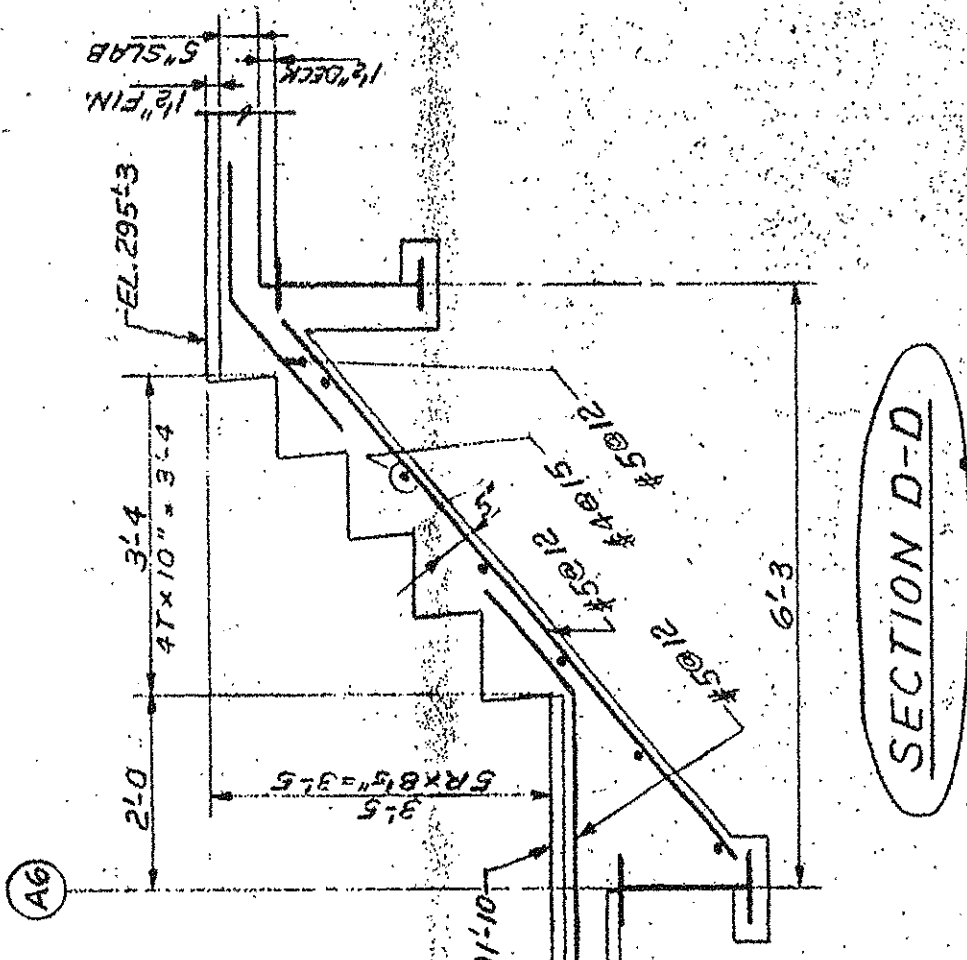
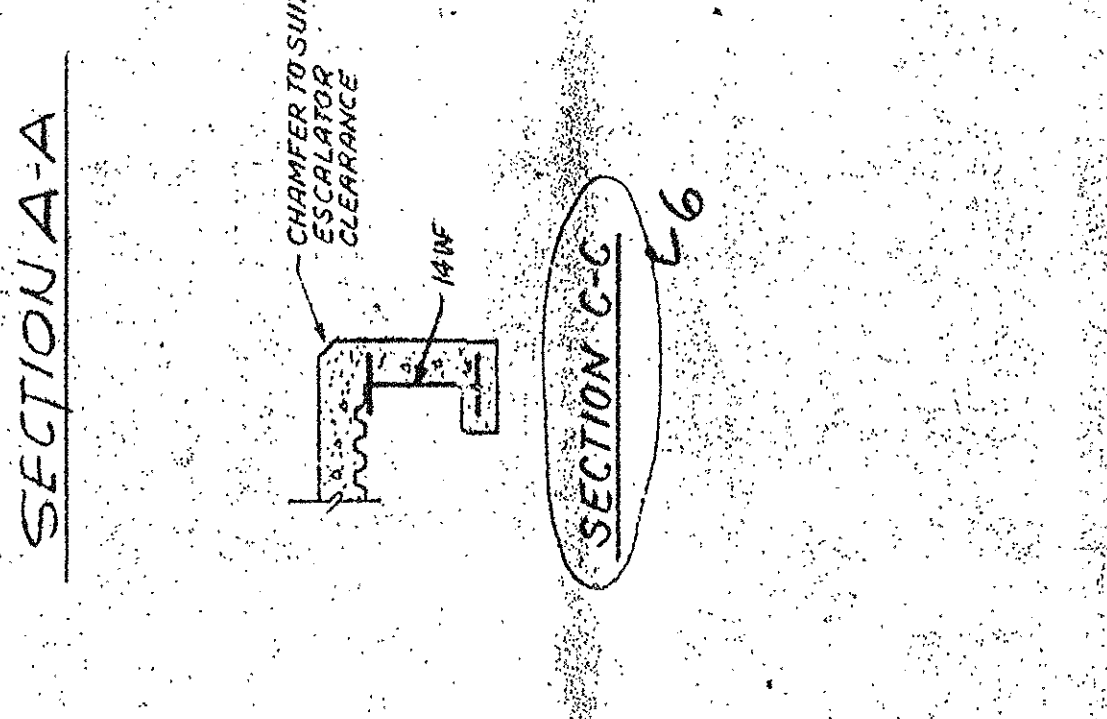
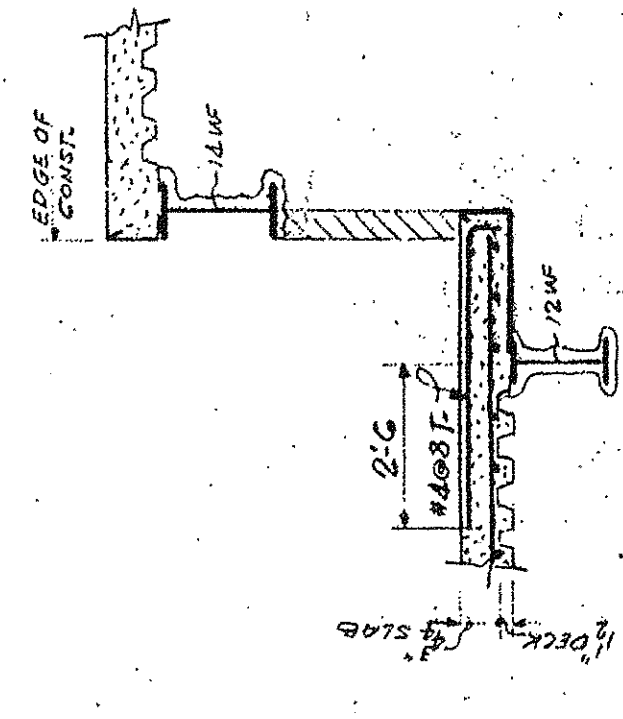
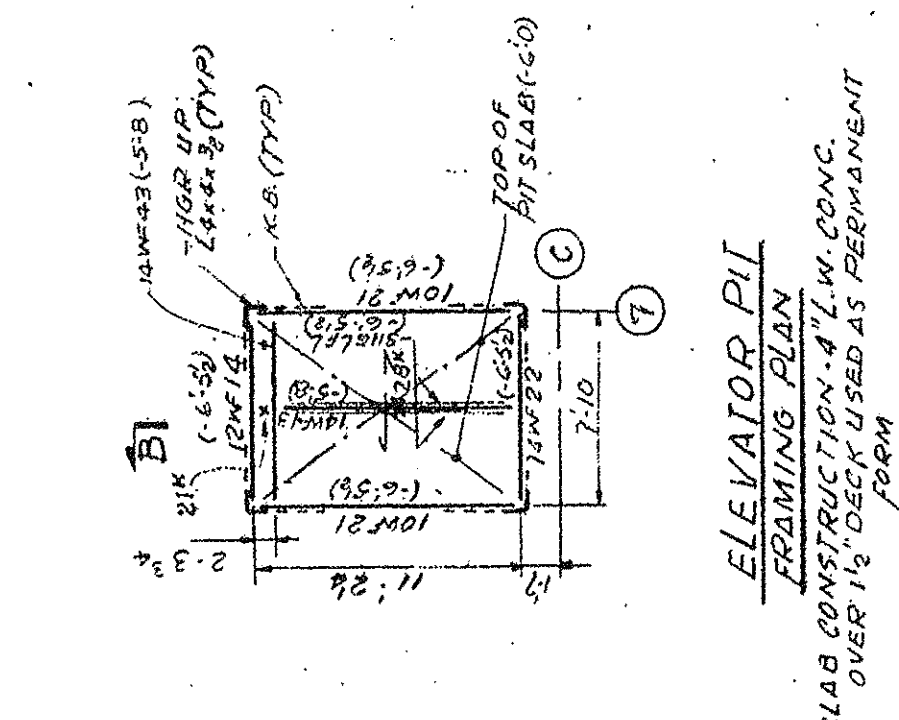


NO.	DATE	DESCRIPTION
1	12-19-71	REVISED AS CIRCLED 2-7
2	12-27-71	REVISED AREA NEAR COL. 9-B FOR CONSTRUCTION MOST CONCERNED
3	1-9-72	REVISED AREA NEAR COL. 9-B AS CIRCLED 3-5
4	2-18-72	REVISED ESCALATOR SUPPORT BM. XBR. SOL. C-10 TO 10. C-5
5	3-20-72	ADDED SECTION B-B
6	7-10-72	REVISED ESCALATOR SUPPORT BM. XBR. SOL. C-10 TO 10. C-5
7	10-26-72	REVISED ESCALATOR SUPPORT BM. XBR. SOL. C-10 TO 10. C-5
8	5-31-73	REVISED AS CIRCLED 8-6



BASE #	BASE SIZE	F. SIZE
1	14W	6" x 6"
2	18W	6" x 6"
3	24W	6" x 6"
4	30W	6" x 6"
5	36W	6" x 6"

ALL DIMENSIONS PARALLEL TO B.M. W.E.B.

10-25-71 RELEASED FOR ORDERING & DRILLING

**BANKERS TRUST
PLAZA**

**A FISHER BROTHERS
PROJECT**

GREENWICH AND LIBERTY ST. N. Y. N. Y.

SHREVE, LAMB & HARMON ASSOCIATES P.C.
ARCHITECTS

475 PARK AVENUE SOUTH N. Y. N. Y. 10016

PETERSON AND BRICKBAUER
ASSOCIATED ARCHITECTS

919 THIRD AVENUE N. Y. N. Y. 10022

THE OFFICE OF JAMES RUDERMAN
STRUCTURAL ENGINEERS

515 MADISON AVENUE N. Y. N. Y. 10022

J. A. ROS. BAUM & BOLLES
MECH. & ELEC. ENGINEERS

345 PARK AVENUE N. Y. N. Y. 10022

CELLAR LEVEL "A" NORTH
FLOORING PLAN

PROJECT NUMBER
7101

DRAWING NUMBER
S-7

DATE
SCALE

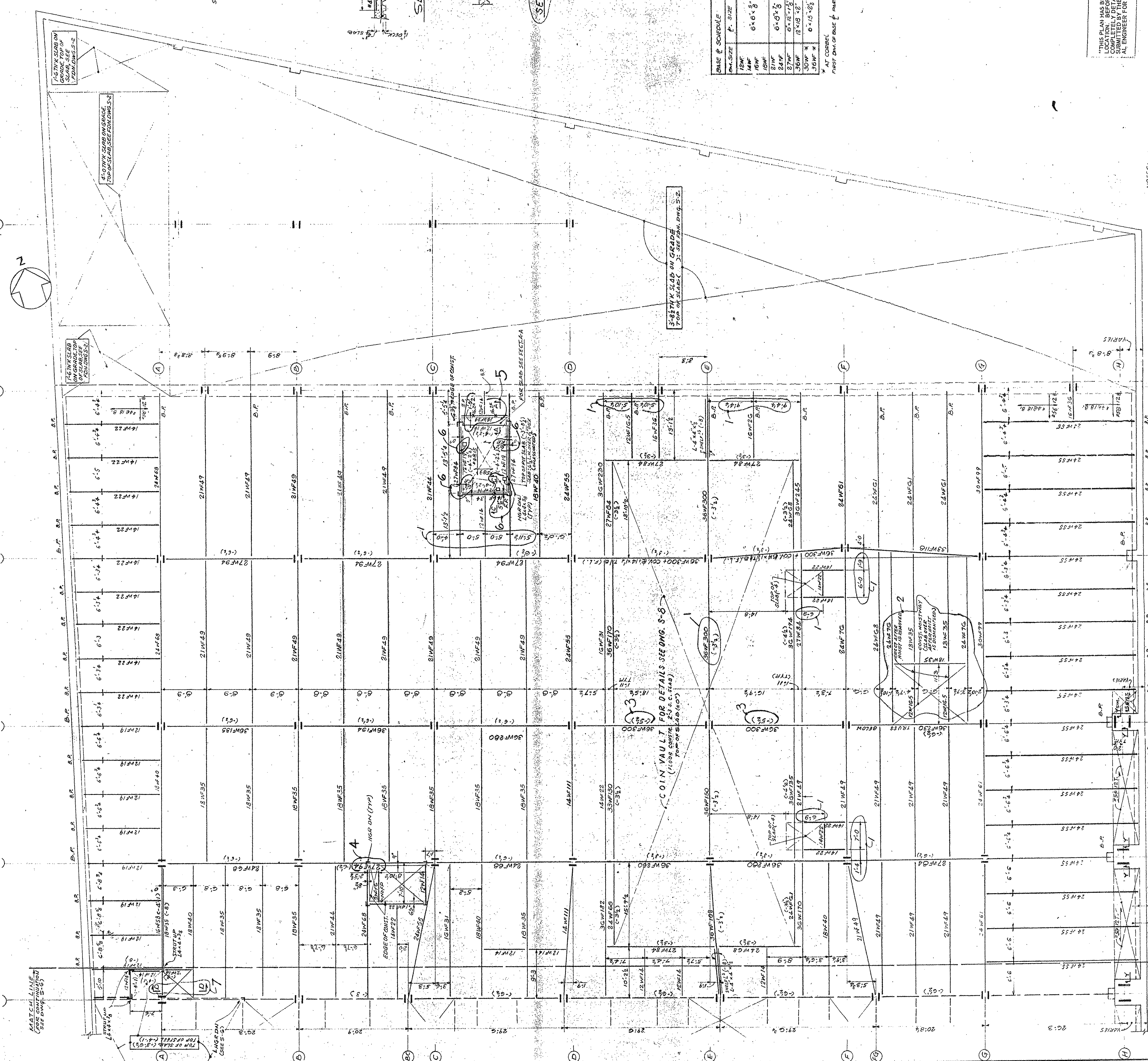


THIS PLAN HAS BEEN DESIGNED TO CARRY THE EQUIPMENT IN ITS FINAL POSITION. THE CONTRACTOR SHALL BE RESPONSIBLE FOR THE COMPLETELY DETAILED PROVISIONS OF THE ARCHITECT AND STRUCTURAL ENGINEER TO THE ARCHITECT AND STRUCTURAL ENGINEER FOR PROVISION.

NOTES:
1. ALL DIMENSIONS PARALLEL TO B.M. W.E.B.
2. ALL DIMENSIONS PARALLEL TO B.M. W.E.B.
3. ALL DIMENSIONS PARALLEL TO B.M. W.E.B.
4. ALL DIMENSIONS PARALLEL TO B.M. W.E.B.
5. ALL DIMENSIONS PARALLEL TO B.M. W.E.B.
6. ALL DIMENSIONS PARALLEL TO B.M. W.E.B.

3. DENOTES COME-FORMING SLAB ONLY

C O N C O U R S E L E V E L A F R A M I N G P L A N (N O R T H)



MATCH LINE
(SEE DWG. S-6)