

REVISIONS

NO.	DATE	DESCRIPTION
A	1-1-72	ADDED MASONRY COLUMN REINFORCING REMOVED CEM. BASE AT COLUMNS
B	1-15-72	ADDED MASONRY COLUMN REINFORCING REMOVED CEM. BASE AT COLUMNS
C	2-15-72	ADDED CONCRETE ENCLAVES AT 26-11.84 ADDED CONCRETE ENCLAVES AT 26-11.84
D	3-2-72	REVISED GRADE 1 ADDED CONCRETE ENCLAVES AT 26-11.84 ADDED CONCRETE ENCLAVES AT 26-11.84
E	6-22-72	ADDED CONCRETE ENCLAVES AT 26-11.84 ADDED CONCRETE ENCLAVES AT 26-11.84
F	7-24-72	REVISED GRADE 1 ADDED CONCRETE ENCLAVES AT 26-11.84 ADDED CONCRETE ENCLAVES AT 26-11.84
G	1-6-73	REVISED GRADE 1 ADDED CONCRETE ENCLAVES AT 26-11.84 ADDED CONCRETE ENCLAVES AT 26-11.84
H	4-1-73	REVISED GRADE 1 ADDED CONCRETE ENCLAVES AT 26-11.84 ADDED CONCRETE ENCLAVES AT 26-11.84
I	10-1-73	REVISED GRADE 1 ADDED CONCRETE ENCLAVES AT 26-11.84 ADDED CONCRETE ENCLAVES AT 26-11.84
J	10-1-73	REVISED GRADE 1 ADDED CONCRETE ENCLAVES AT 26-11.84 ADDED CONCRETE ENCLAVES AT 26-11.84

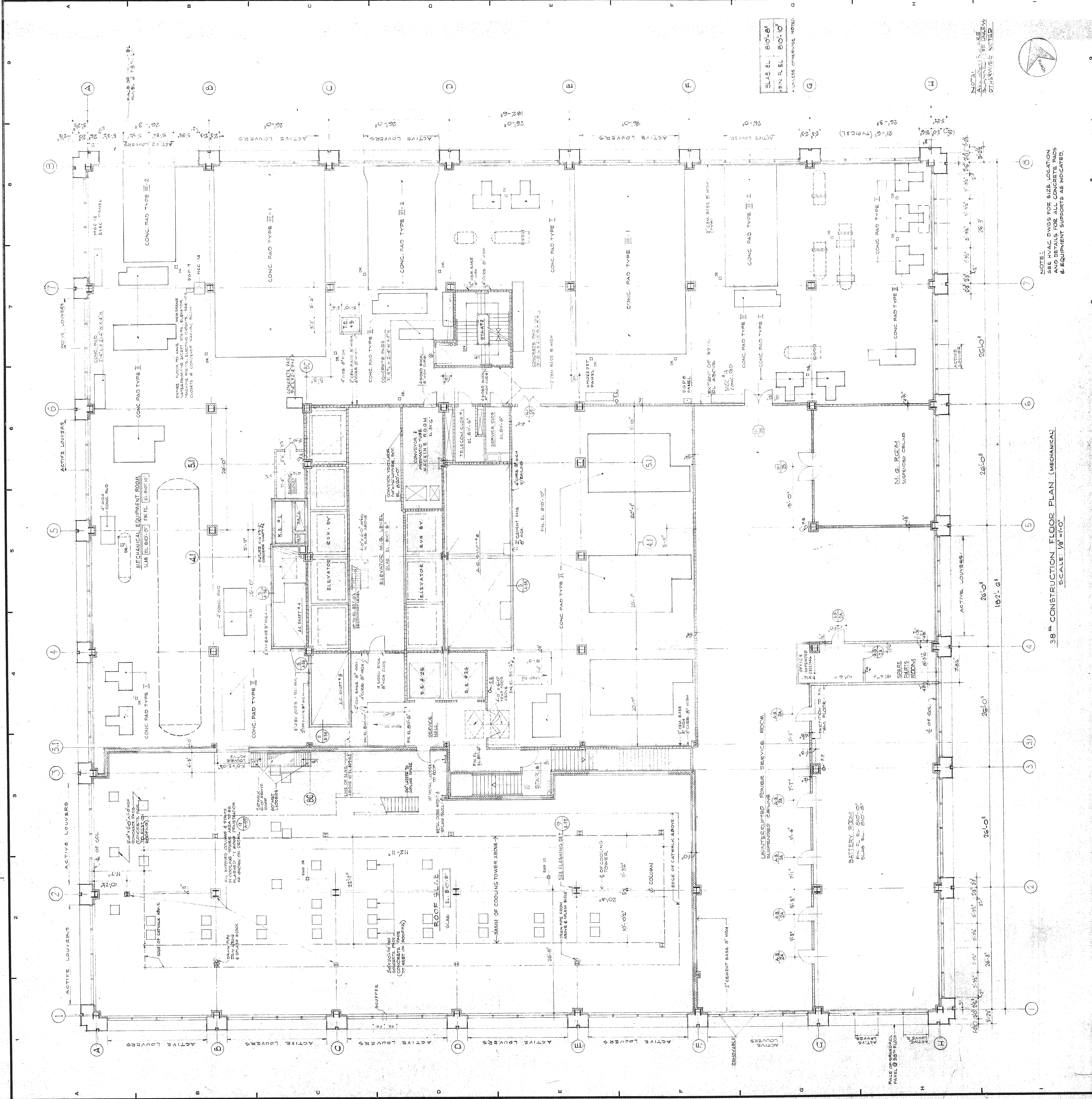
BANKERS TRUST PLAZA

A FISHER BROTHERS PROJECT

GREENWICH AND LIBERTY ST. N. Y. N. Y.
SHREVE LAMB & HARMON ASSOCIATES P.C.
 ARCHITECTS
 475 PARK AVENUE SOUTH N. Y. N. Y. 10018
PETERSON AND BRICKBAUER ASSOCIATED ARCHITECTS
 919 THIRD AVENUE N. Y. N. Y. 10022
THE OFFICE OF JAMES RUDERMAN
 STRUCTURAL ENGINEERS
 335 MADISON AVENUE N. Y. N. Y. 10017
J. A. ROS. BAUM & BOLLES
 MECH. & ELEC. ENGINEERS
 345 PARK AVENUE N. Y. N. Y. 10022

38th FLOOR CONSTRUCTION
 (40th FLOOR)

PROJECT NUMBER	7101
DRAWING NUMBER	A 26
DATE	10-1-73
SCALE	1/8" = 1'-0"



NOTE:
 SEE HVAC DWGS FOR SIZE LOCATION
 & EQUIPMENT SUPPORTS AS INDICATED.

38th CONSTRUCTION FLOOR PLAN (MECHANICAL)
 SCALE: 1/8" = 1'-0"