

REVISIONS		
NO.	DATE	DESCRIPTION
A	11-11-71	GENERAL REVISION
B	2-16-72	ADD CD PIPE ENCLOSURE AT GCL HING
C	3-14-72	REVISED ELEC. CLO. #2
D	7-24-72	REVISIONS TO INTERFERENCES WITH WORK SUBMIT
E	9-13-72	ADD STAIRS TO STAIRWELL
F	10-31-72	ADD STAIRS TO STAIRWELL

ISSUED TO	NO.	DATE	PKG. NO.
F/W	2	4-14-74	PC 24222
F/W	4	1-24-74	PC 24219
F/W	1	11-14-73	PC 24243
F/W	2	5-7-73	PC 23948
B.T.G.	2	4-11-73	PC 24133
F/W	2	4-12-73	PC 24115
G.H.	1	3-14-73	PC 23950
F/W	0	2-8-73	PC 23927
F/W	0	12-19-72	PC 19396
F/W	2	11-17-72	PC 24210
G.H.	0	10-25-71	PC 13322

**BANKERS TRUST
PLAZA**

**A FISHER BROTHERS
PROJECT**

GREENWICH AND LIBERTY ST. N.Y. N.Y.

SHREVE, LAMB & HARMON ASSOCIATES P.C.
ARCHITECTS
475 PARK AVENUE SOUTH N.Y. N.Y. 10016

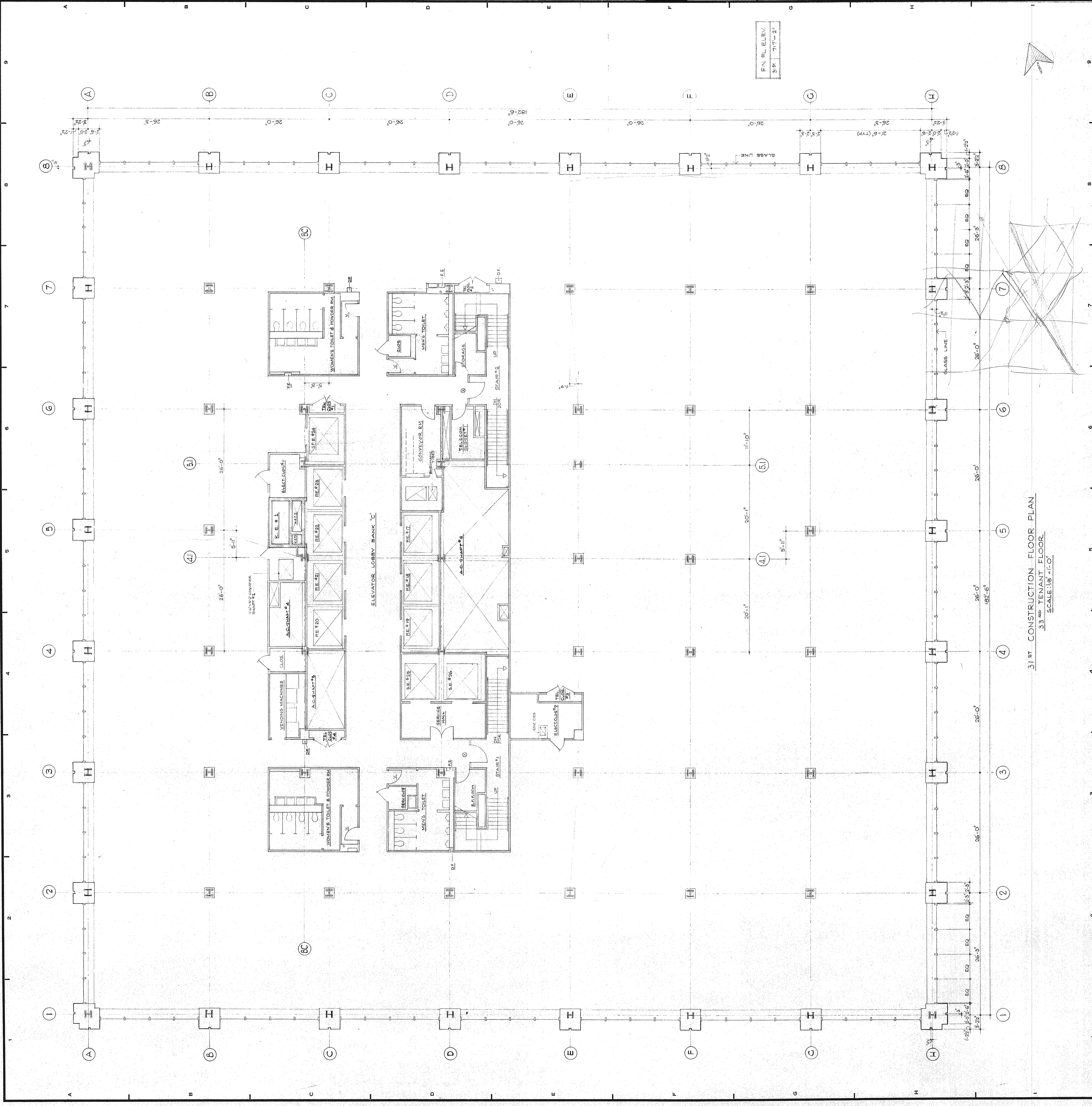
PETERSON AND BRICKBAUER
ASSOCIATED ARCHITECTS
919 THIRD AVENUE N.Y. N.Y. 10022

THE OFFICE OF JAMES RUDERMAN
STRUCTURAL ENGINEERS
315 MADISON AVENUE N.Y. N.Y. 10022

J. A. ROSS, BAUM & BOLLE'S
MECH. & ELEC. ENGINEERS
345 PARK AVENUE N.Y. N.Y. 10022

31 ST. FLEPLAN-CONSTRUCTION
(33-10 TENANT)

PROJECT NUMBER	7101
DRAWING NUMBER	A 24
DATE	SEP 21 1972
SCALE	1/8" = 1'-0"



31 ST. CONSTRUCTION FLOOR PLAN
33 RD TENANT FLOOR
SCALE 1/8" = 1'-0"