

NO.	DATE	DESCRIPTION
A	9-13-71	REVISED TO CONFORM TO CITY PLANNING COMMISSION AND DEPT OF BLDG REGULATIONS
B	1-10-72	REVISED "REGULATION OF PLANNING COMMISSION"
C	3-13-72	ADDED SECOND AND THIRD FLOOR PLANS (IN 304)
D	1-16-72	REVISED COMPUTATIONS PER 12 DUE TO NEW MECHANICAL SPACES

LOCATION 125-130 LIBERTY STREET, NEW YORK CITY, NEW YORK, 10013
LAND BLOCK BLOCK 54 N - LOTS 1, 2, 3, 4, 5, 6, 7, 8, 9, 10, 11, 12, 13, 14, 15, 16, 17, 18, 19, 20, 21, 22, 23, 24, 25, 26
ZONING SPECIAL GREENWICH STREET DEVELOPMENT DISTRICT
SECTION 31-00 GENERAL DISTRICT: COMMERCIAL
 31-10 SPECIAL COMMERCIAL DISTRICTS AS FOLLOWS:
 31-16 C6-4 SPECIAL DISTRICT G
 32-00 USE REGULATIONS: C-6 USE GROUPS 1, 2, 3, 4, 5, 6, 7, 8, 9, 10, 11, 12, 13, 14, 15, 16, 17, 18, 19, 20, 21, 22, 23, 24, 25, 26
 33-00 BULK REGULATIONS:
 33-11 ZONING LOT AREA: 65,082 SQ. FT. (INCLUDES CEDAR ST.)

REVISIONS

NO.	DATE	DESCRIPTION
1	9-13-71	REVISED TO CONFORM TO CITY PLANNING COMMISSION AND DEPT OF BLDG REGULATIONS
2	1-10-72	REVISED "REGULATION OF PLANNING COMMISSION"
3	3-13-72	ADDED SECOND AND THIRD FLOOR PLANS (IN 304)
4	1-16-72	REVISED COMPUTATIONS PER 12 DUE TO NEW MECHANICAL SPACES

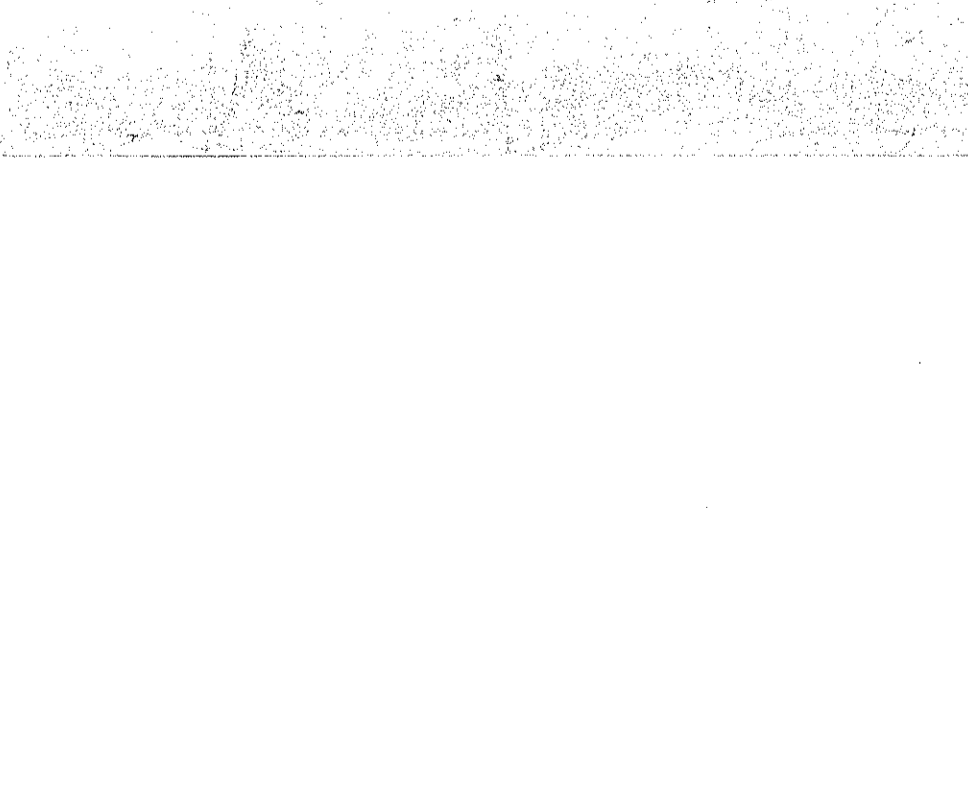
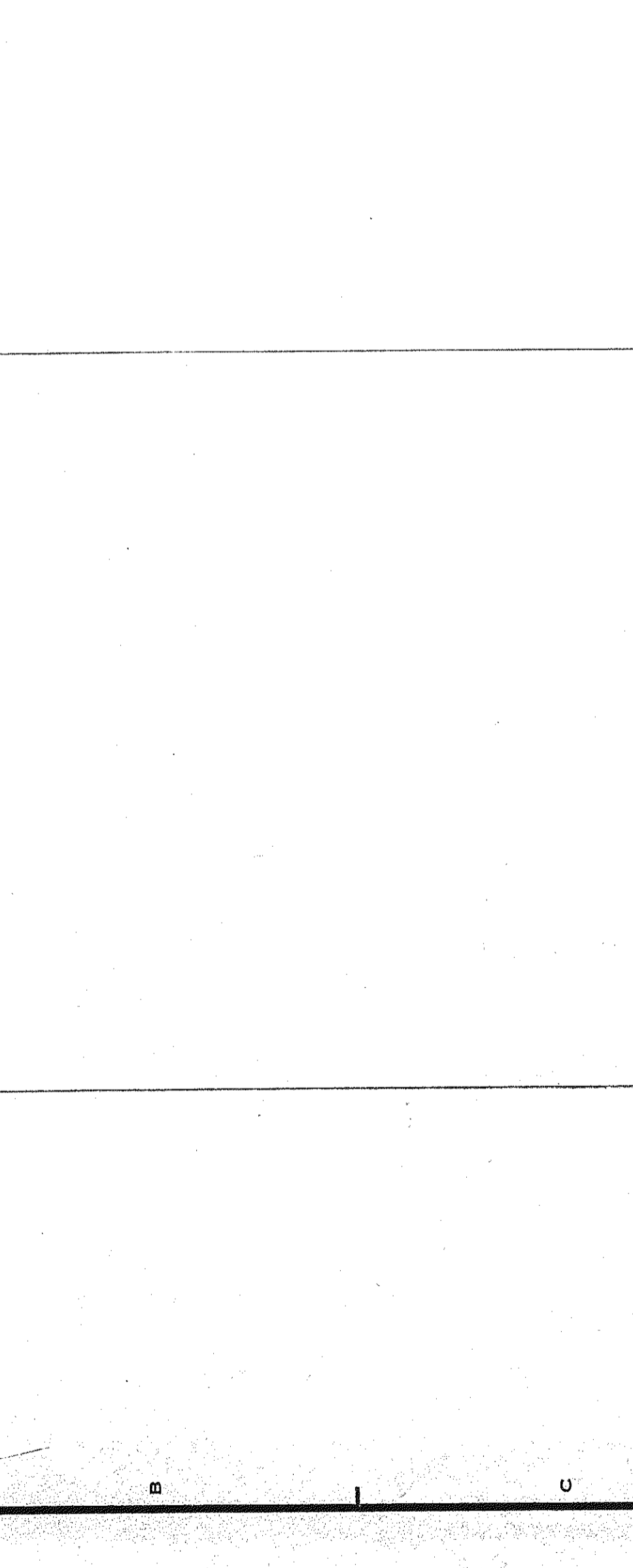
1. BASIC MINIMUM FLOOR AREA 65,082 S.F. FLOOR AREA OF 40%
2. ADJUSTED BASIC MAXIMUM FLOOR AREA 164,800 S.F. FLOOR AREA OF 250%
3. CHANGING WAY IMPROVEMENTS 164,800 S.F. FLOOR AREA OF 250%
4. PLAZA ON ALBANY STREET 97,870 S.F. FLOOR AREA OF 150%
5. PLAZA ON WASHINGTON STREET 16,730 S.F. FLOOR AREA OF 25%
6. DISCRETIONARY IMPROVEMENTS 11,480 S.F. FLOOR AREA OF 17.5%
7. PREFERRED LOT IMPROVEMENTS 11,480 S.F. FLOOR AREA OF 17.5%
8. TOWER COVERAGE 11,480 S.F. FLOOR AREA OF 17.5%
**9. MAX. PERMITTED BY Z.O.C. 118,516 S.F. FLOOR AREA OF 181%
 FLOOR AREA IS IN EXCESS OF PERMITTED OR USED**

NOTES:
 1. DESIGNED TOWER FLOORS AREA 118,516 S.F. OR 181% COVERAGE. TOWER COVERAGE IS 118,516 S.F. OR 181% COVERAGE. TOWER COVERAGE IS 118,516 S.F. OR 181% COVERAGE.
 2. TOWER COVERAGE IS 118,516 S.F. OR 181% COVERAGE. TOWER COVERAGE IS 118,516 S.F. OR 181% COVERAGE.
 3. TOWER COVERAGE IS 118,516 S.F. OR 181% COVERAGE. TOWER COVERAGE IS 118,516 S.F. OR 181% COVERAGE.
 4. TOWER COVERAGE IS 118,516 S.F. OR 181% COVERAGE. TOWER COVERAGE IS 118,516 S.F. OR 181% COVERAGE.
 5. TOWER COVERAGE IS 118,516 S.F. OR 181% COVERAGE. TOWER COVERAGE IS 118,516 S.F. OR 181% COVERAGE.
 6. TOWER COVERAGE IS 118,516 S.F. OR 181% COVERAGE. TOWER COVERAGE IS 118,516 S.F. OR 181% COVERAGE.
 7. TOWER COVERAGE IS 118,516 S.F. OR 181% COVERAGE. TOWER COVERAGE IS 118,516 S.F. OR 181% COVERAGE.
 8. TOWER COVERAGE IS 118,516 S.F. OR 181% COVERAGE. TOWER COVERAGE IS 118,516 S.F. OR 181% COVERAGE.
 9. TOWER COVERAGE IS 118,516 S.F. OR 181% COVERAGE. TOWER COVERAGE IS 118,516 S.F. OR 181% COVERAGE.

ISSUED TO	NO.	DATE	PKG. NO.
ARCHITECT	1	9-13-71	PC 19205
ENGINEER	2	1-10-72	PC 21216
PLANNING	3	3-13-72	PC 21216
REVISION	4	1-16-72	PC 21216
REVISION	5	1-10-72	PC 21216
REVISION	6	3-13-72	PC 21216
REVISION	7	1-16-72	PC 21216
REVISION	8	1-10-72	PC 21216
REVISION	9	3-13-72	PC 21216
REVISION	10	1-16-72	PC 21216
REVISION	11	1-10-72	PC 21216
REVISION	12	3-13-72	PC 21216
REVISION	13	1-16-72	PC 21216
REVISION	14	1-10-72	PC 21216
REVISION	15	3-13-72	PC 21216
REVISION	16	1-16-72	PC 21216
REVISION	17	1-10-72	PC 21216
REVISION	18	3-13-72	PC 21216
REVISION	19	1-16-72	PC 21216
REVISION	20	1-10-72	PC 21216
REVISION	21	3-13-72	PC 21216
REVISION	22	1-16-72	PC 21216
REVISION	23	1-10-72	PC 21216
REVISION	24	3-13-72	PC 21216
REVISION	25	1-16-72	PC 21216
REVISION	26	1-10-72	PC 21216
REVISION	27	3-13-72	PC 21216
REVISION	28	1-16-72	PC 21216
REVISION	29	1-10-72	PC 21216
REVISION	30	3-13-72	PC 21216
REVISION	31	1-16-72	PC 21216
REVISION	32	1-10-72	PC 21216
REVISION	33	3-13-72	PC 21216
REVISION	34	1-16-72	PC 21216
REVISION	35	1-10-72	PC 21216
REVISION	36	3-13-72	PC 21216
REVISION	37	1-16-72	PC 21216
REVISION	38	1-10-72	PC 21216
REVISION	39	3-13-72	PC 21216
REVISION	40	1-16-72	PC 21216
REVISION	41	1-10-72	PC 21216
REVISION	42	3-13-72	PC 21216
REVISION	43	1-16-72	PC 21216
REVISION	44	1-10-72	PC 21216
REVISION	45	3-13-72	PC 21216
REVISION	46	1-16-72	PC 21216
REVISION	47	1-10-72	PC 21216
REVISION	48	3-13-72	PC 21216
REVISION	49	1-16-72	PC 21216
REVISION	50	1-10-72	PC 21216

FLOOR	AGGREGATE AREA	PERMITTED AREA	EXPLANATION
33	9,350	9,350	
32	35,685	35,685	
31	34,930	34,930	
30	1,000	1,000	
29	1,000	1,000	
28	1,000	1,000	
27	1,000	1,000	
26	1,000	1,000	
25	1,000	1,000	
24	1,000	1,000	
23	1,000	1,000	
22	1,000	1,000	
21	1,000	1,000	
20	1,000	1,000	
19	1,000	1,000	
18	1,000	1,000	
17	1,000	1,000	
16	1,000	1,000	
15	1,000	1,000	
14	1,000	1,000	
13	1,000	1,000	
12	1,000	1,000	
11	1,000	1,000	
10	1,000	1,000	
9	1,000	1,000	
8	1,000	1,000	
7	1,000	1,000	
6	1,000	1,000	
5	1,000	1,000	
4	1,000	1,000	
3	1,000	1,000	
2	1,000	1,000	
1	1,000	1,000	
TOTALS	118,516	118,516	

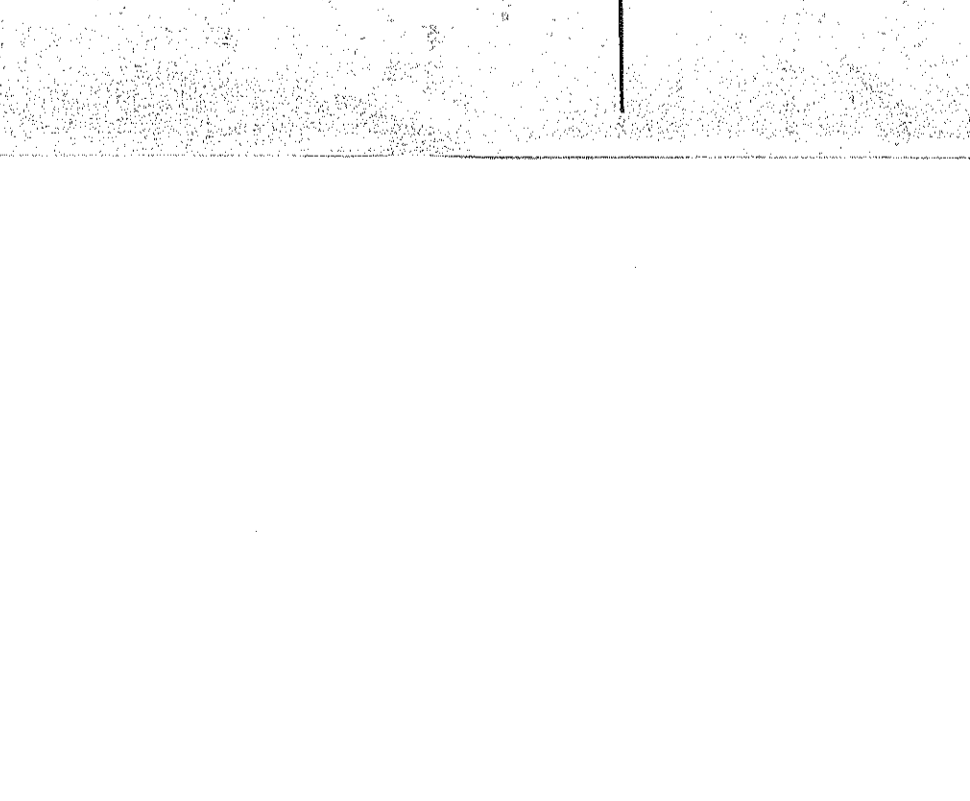
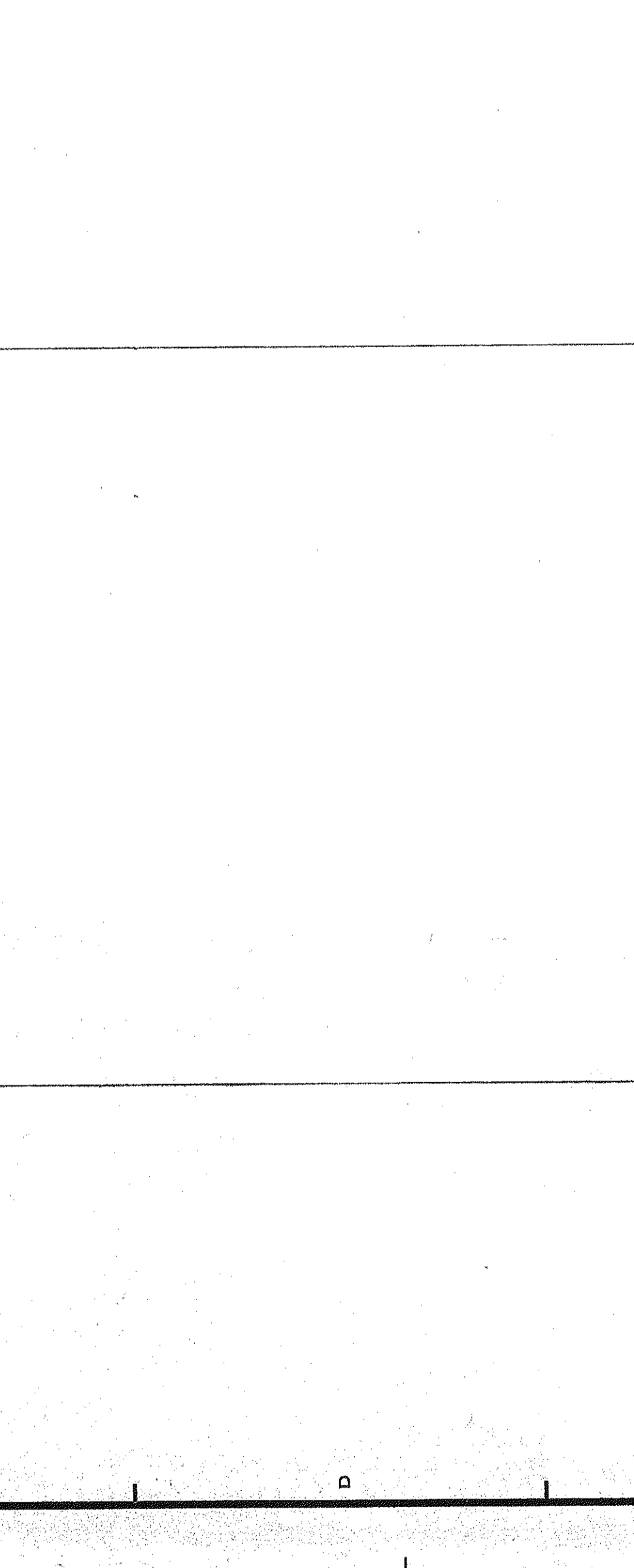
GREENWICH STREET ELEVATION
 SCALE: 1/2" = 1'-0"
 81'-0" WASHINGTON ST.
 100'-0" ALBANY STREET
 100'-0" GREENWICH STREET



GREENWICH STREET ELEVATION
 SCALE: 1/2" = 1'-0"
 81'-0" WASHINGTON ST.
 100'-0" ALBANY STREET
 100'-0" GREENWICH STREET

FLOOR	AGGREGATE AREA	PERMITTED AREA	EXPLANATION
33	9,350	9,350	
32	35,685	35,685	
31	34,930	34,930	
30	1,000	1,000	
29	1,000	1,000	
28	1,000	1,000	
27	1,000	1,000	
26	1,000	1,000	
25	1,000	1,000	
24	1,000	1,000	
23	1,000	1,000	
22	1,000	1,000	
21	1,000	1,000	
20	1,000	1,000	
19	1,000	1,000	
18	1,000	1,000	
17	1,000	1,000	
16	1,000	1,000	
15	1,000	1,000	
14	1,000	1,000	
13	1,000	1,000	
12	1,000	1,000	
11	1,000	1,000	
10	1,000	1,000	
9	1,000	1,000	
8	1,000	1,000	
7	1,000	1,000	
6	1,000	1,000	
5	1,000	1,000	
4	1,000	1,000	
3	1,000	1,000	
2	1,000	1,000	
1	1,000	1,000	
TOTALS	118,516	118,516	

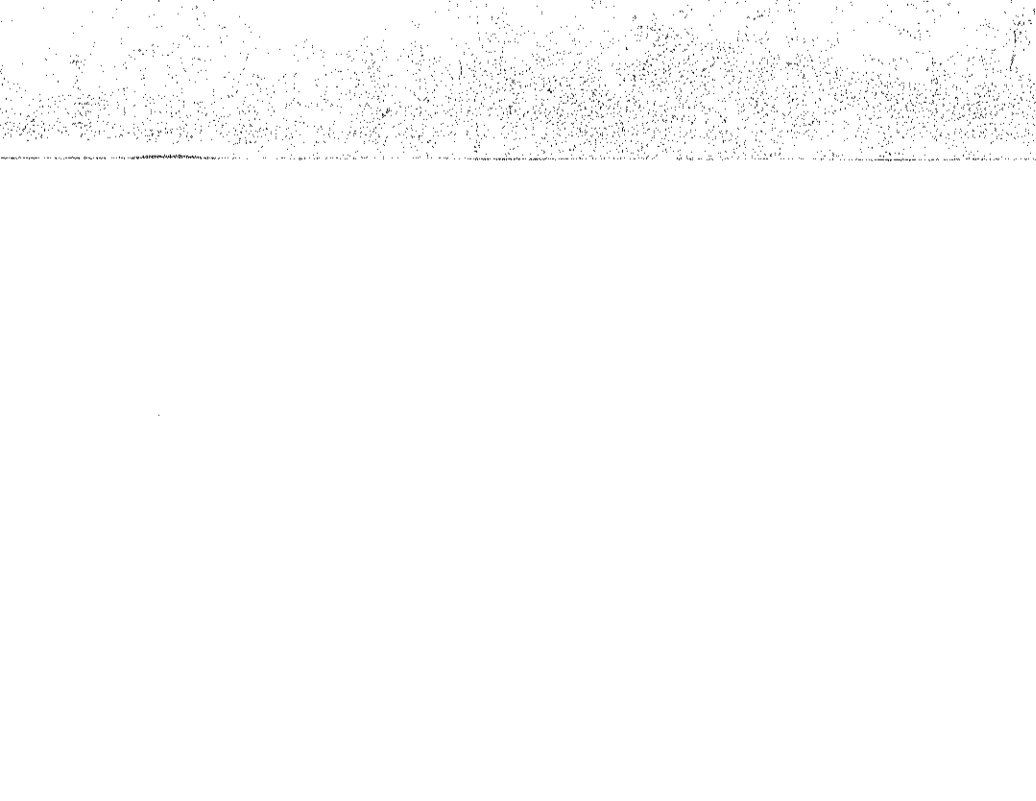
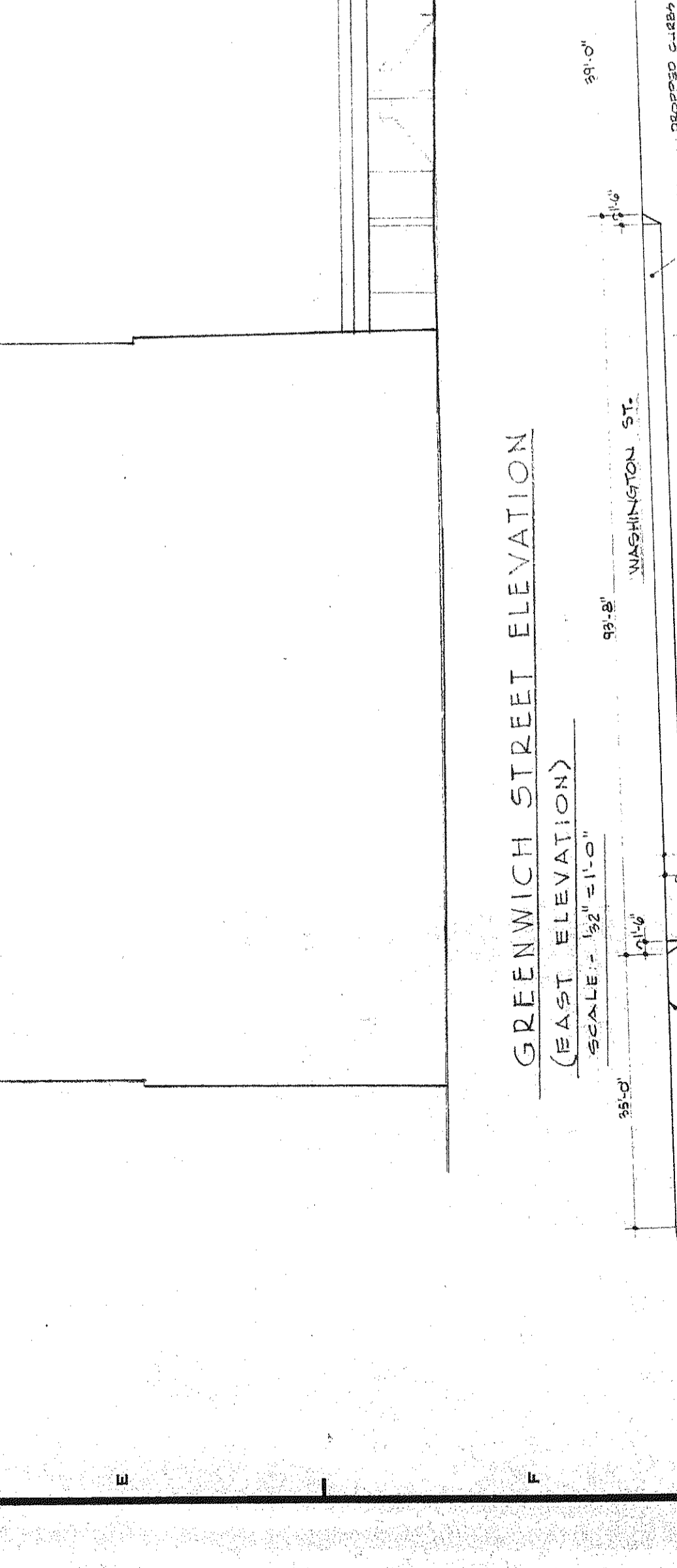
GREENWICH STREET ELEVATION
 SCALE: 1/2" = 1'-0"
 81'-0" WASHINGTON ST.
 100'-0" ALBANY STREET
 100'-0" GREENWICH STREET



GREENWICH STREET ELEVATION
 SCALE: 1/2" = 1'-0"
 81'-0" WASHINGTON ST.
 100'-0" ALBANY STREET
 100'-0" GREENWICH STREET

FLOOR	AGGREGATE AREA	PERMITTED AREA	EXPLANATION
33	9,350	9,350	
32	35,685	35,685	
31	34,930	34,930	
30	1,000	1,000	
29	1,000	1,000	
28	1,000	1,000	
27	1,000	1,000	
26	1,000	1,000	
25	1,000	1,000	
24	1,000	1,000	
23	1,000	1,000	
22	1,000	1,000	
21	1,000	1,000	
20	1,000	1,000	
19	1,000	1,000	
18	1,000	1,000	
17	1,000	1,000	
16	1,000	1,000	
15	1,000	1,000	
14	1,000	1,000	
13	1,000	1,000	
12	1,000	1,000	
11	1,000	1,000	
10	1,000	1,000	
9	1,000	1,000	
8	1,000	1,000	
7	1,000	1,000	
6	1,000	1,000	
5	1,000	1,000	
4	1,000	1,000	
3	1,000	1,000	
2	1,000	1,000	
1	1,000	1,000	
TOTALS	118,516	118,516	

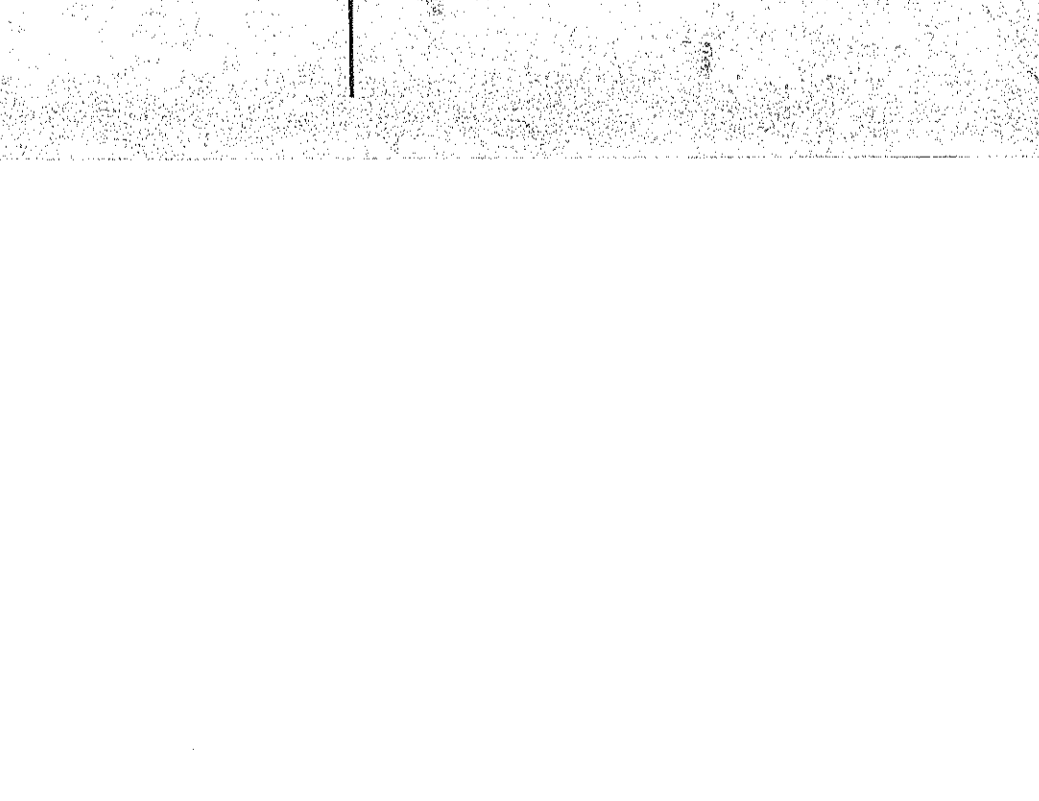
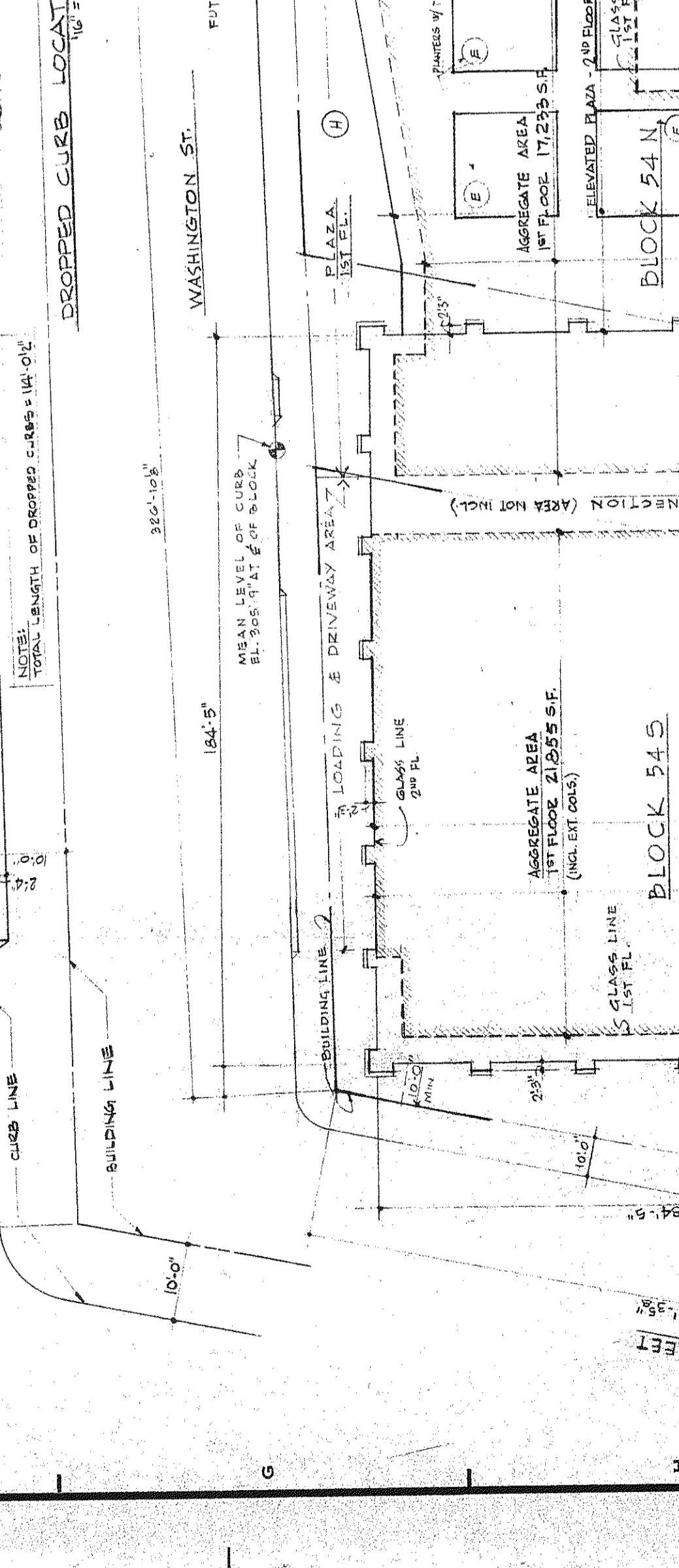
GREENWICH STREET ELEVATION
 SCALE: 1/2" = 1'-0"
 81'-0" WASHINGTON ST.
 100'-0" ALBANY STREET
 100'-0" GREENWICH STREET



GREENWICH STREET ELEVATION
 SCALE: 1/2" = 1'-0"
 81'-0" WASHINGTON ST.
 100'-0" ALBANY STREET
 100'-0" GREENWICH STREET

FLOOR	AGGREGATE AREA	PERMITTED AREA	EXPLANATION
33	9,350	9,350	
32	35,685	35,685	
31	34,930	34,930	
30	1,000	1,000	
29	1,000	1,000	
28	1,000	1,000	
27	1,000	1,000	
26	1,000	1,000	
25	1,000	1,000	
24	1,000	1,000	
23	1,000	1,000	
22	1,000	1,000	
21	1,000	1,000	
20	1,000	1,000	
19	1,000	1,000	
18	1,000	1,000	
17	1,000	1,000	
16	1,000	1,000	
15	1,000	1,000	
14	1,000	1,000	
13	1,000	1,000	
12	1,000	1,000	
11	1,000	1,000	
10	1,000	1,000	
9	1,000	1,000	
8	1,000	1,000	
7	1,000	1,000	
6	1,000	1,000	
5	1,000	1,000	
4	1,000	1,000	
3	1,000	1,000	
2	1,000	1,000	
1	1,000	1,000	
TOTALS	118,516	118,516	

GREENWICH STREET ELEVATION
 SCALE: 1/2" = 1'-0"
 81'-0" WASHINGTON ST.
 100'-0" ALBANY STREET
 100'-0" GREENWICH STREET



GREENWICH STREET ELEVATION
 SCALE: 1/2" = 1'-0"
 81'-0" WASHINGTON ST.
 100'-0" ALBANY STREET
 100'-0" GREENWICH STREET

FLOOR	AGGREGATE AREA	PERMITTED AREA	EXPLANATION
33	9,350	9,350	
32	35,685	35,685	
31	34,		